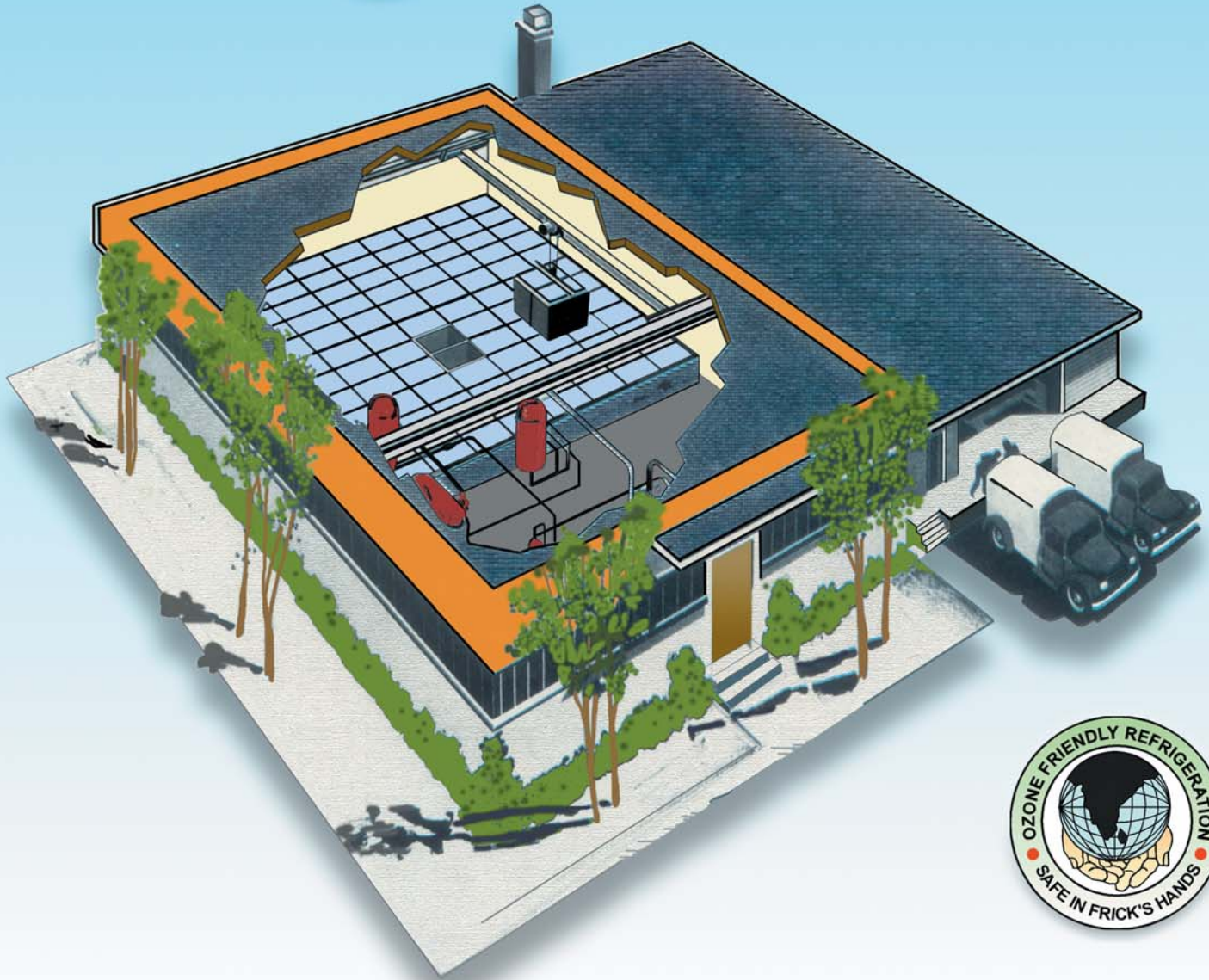


Frick Packaged Ice Plants



Capacity : 5 to 65 Tons per day



Frick India Ltd.

GENERAL

Frick is known the world over as the largest manufacturer of ice plants for over a hundred years. Frick standard Block ice making plants are available in 9 sizes with a capacity range of 3 to 65 tons of ice per 24 hrs. depending upon size and customer's specifications. Plants are designed for either 100 Lb (45Kg) or 300 Lb (135Kg.) capacity cans. Custom-made plants can also be designed for 55Lb (25Kg.) capacity cans.

FREEZING SYSTEM

Frick HDI Compressors : Sturdy in construction and reliable in performance, HDI compressors are designed to handle the most demanding applications, improved-design compressor is fitted with totally enclosed mechanical seal. Separate suction and discharge valve ports ensure low superheat and power saving besides ensuring long life. Capacity steps option also available.

Frick Evaporative Condensers : All fittings, water sprinkling headers and axial or centrifugal fans are supplied as standard equipment. Galvanised pipe and desuperheater ensure long life and low condensing pressures. Cuts down water and civil works costs to a minimum. Atmospheric as well as Vertical Shell 7 tube type Condensers are also available.

Evaporative Coil : High-efficiency, sleek Frick trunk-type Evaporative coils are designed for installation in the brine raceway section of the freezing tank. Trunk Coils are rigidly braced and reinforced using finest quality steel and welding materials.

Liquid Ammonia receiver : High-pressure tested Frick pressure vessels fully equipped with valves, fittings, liquid level gauge and floor support. Manufactured as per ASME codes to ensure safety in plant and surroundings.

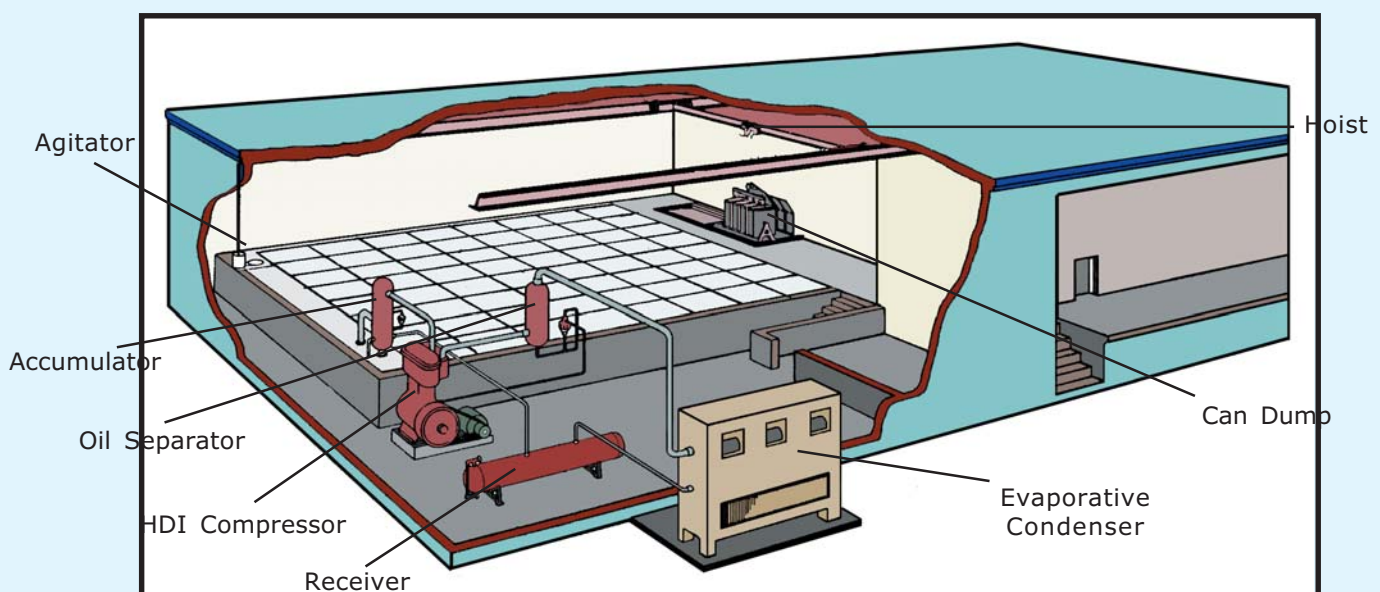
Discharge line oil Separator : Simple, compact, Frick oil separator effectively removed entrained oil vapours from the discharge gas.

System Piping : Frick designed system piping consisting of pipes ammonia valves and fittings, laboratory tested for superlative strength and maximum safety.

Freezing Tank : Sturdily constructed with heavy gauge finest quality MS sheets and rigidly supported and reinforced, the freezing tank is supplied unassembled and is designed for field welding. The brine raceway system is employed for standard Frick Plants. An accumulator and float valve are furnished for liquid level control.

Agitator : A vertically mounted belt-driven propeller agitator is provided to circulate the brine through evaporator coils and between the ice cans. This ensures fast and uniform freezing.

Ice cans : Fabricated from 16-gauge galvanised steel sheet. Standard sizes are of 45Kg. (100 Lb) and 135 Kg (300 Lb) capacity. Cans of 25Kg (55Lb) capacity can be supplied to meet customer's specific requirement. Cans are sturdy and are interchangeable in the grid system.



Plant Cut-away

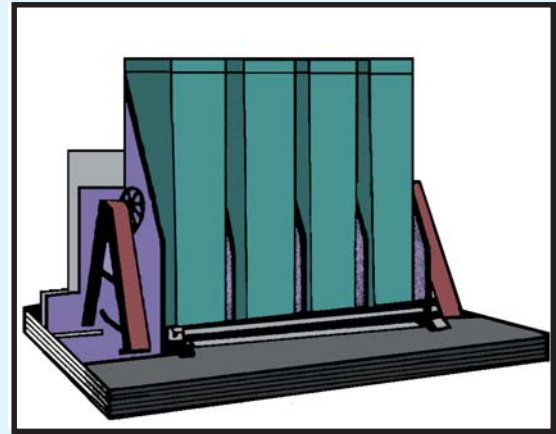
HARVESTING SYSTEM

Overhead Hoist : Manual or electric hoist for removing cans from the freezing tank is furnished depending upon the can dump system employed. Convenient one-man operation for all purposes.

Can Fillers : Suitable for large ice plants using Can grid system. Cans are filled simultaneously and filler tanks are easily adjusted to provide automatically the exact quantity of water to each can. Filler tanks are mounted on a steel frame and supported with either wall brackets or floorstand.

Grid System : (Optional) For unloading upto 20 cans at a time. Rivetted and galvanised for long usage.

Can Dump : A sprinkler type can dump is provided for plants arranged to harvest 1 or 2 cans at a time. When 3 or more cans are harvested at once, a separate steel dip tank is furnished for thawing ice loose from the cans.

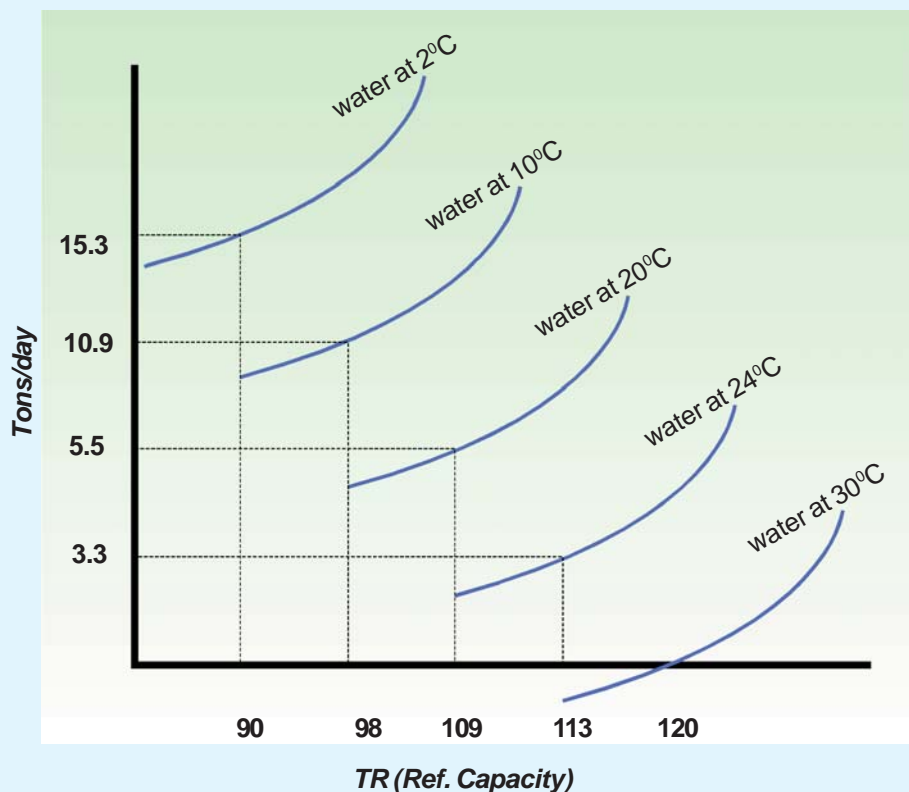


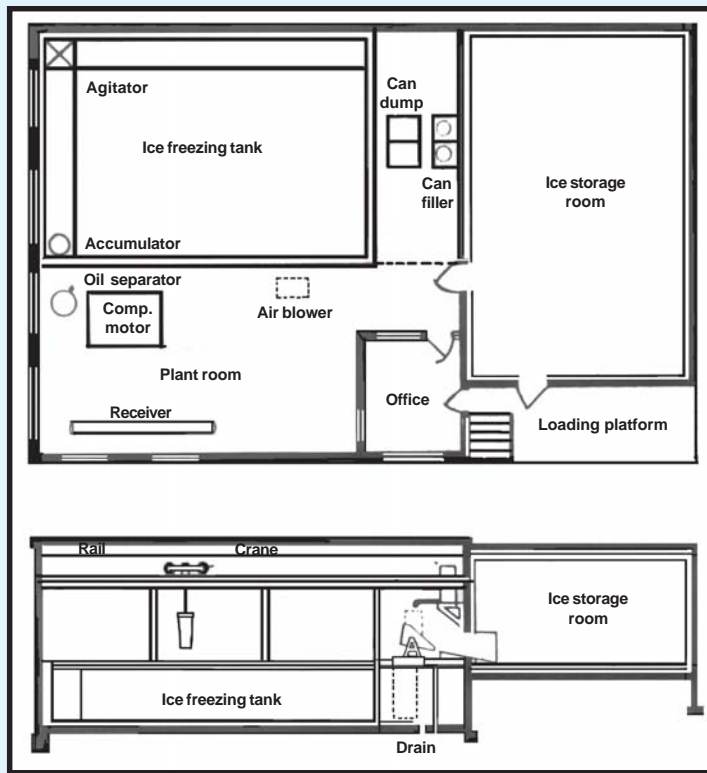
4-Can Dump Unit

OPTIONAL EQUIPMENTS

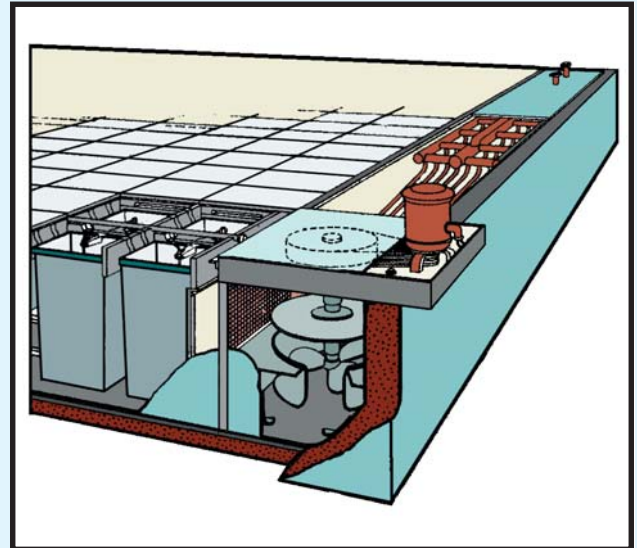
Storage Room Coils : Ceiling Coils of heavy grade steel pipe with necessary flanges and hangers are available for the ice storage room. The prime surface coil arrangement is based on the recommended room sizes. Air Cooling Units with plate fins can also be supplied.

Extra Ice generation due to lower inlet water temperature for making ice (For 60 tons per day ice plant)





TYPICAL ICE PLANT LAYOUT



Cut-away of Freezing tank section showing agitator, Ice cans & Trunk Coil

TECHNICAL DATA

Plant Capacity (Tons of ice/24 hrs.)	Can Capacity Kg (Lb) model	HDI Compr-ssor	BHP	Motor recomm-nded HP (Kw)	Ammonia Charge Kg.	Sodium Chloride for Brine Kg.	Calcium Chloride for Brine Kg.	Length Mtr.(Ft)	Width Mtr. (Ft)
6.25	45 (100)	5 x 5	21.5	25 (18.5)	250	2365	3140	17.37 (57)	8.53 (28)
10.50	45 (100)	6 x 6	34.1	40 (30)	460	4000	5375	20.72 (68)	9.14 (30)
10.50	135 (300)	6 x 6	34.1	40 (30)	410	5000	6725	20.72 (68)	9.14 (30)
16.50	45 (100)	7 x 7	53	60 (45)	775	6550	8775	24.38 (80)	10.36 (34)
16.50	135 (300)	7 x 7	53	60 (45)	635	7140	8775	24.38 (80)	10.36 (34)
21.00	135 (300)	6 x6 (2)	34.1x2	40(30)x2	800	9825	13400	26.21 (86)	14.02 (46)
34.00	135 (300)	9 x 9	102.9	120 (90)	1100	15300	20450	30.48 (100)	15.45 (51)
53.00	135 (300)	11 x 10	165.1	180 (135)	1725	20725	27825	*	*

Notes : 1. Specifications are subject to change without notice. 2. For plants requiring 25 Kg (55Lb) capacity cans, ammonia and brine requirements can be worked out on request. 3. Above capacities are based on 20 psig suction pressure and 185 psig condensing pressure. * For space requirement for plants above 34 ton capacity, please contact our office.

For further details please



FRICK INDIA LIMITED

809, "Surya Kiran", 19 K. G. Marg, New Delhi - 110 001.
 Ph : 23322381/84/91. Fax : 23322396
 email : delhi@frick.co.in

FACTORY : 21.5 km, Main Mathura Road, Faridabad
 Ph : 2275691-94, 2270546-47 Fax : 0129-2275695
 email : fbd@frick.co.in

Branch Off.	Address	Phones	Fax	email
BANGALORE	: T-1, Swastik Manandi Arcade 401/2, Sheshadri Puram, Bangalore-560020.	22196021, 23469693	23469693	bng@frick.co.in
CHANDIGARH	: 182/14, Industrial Area, Chandigarh - 160 002.	2658122	2658078	chd@frick.co.in
CHENNAI	: 243, Anna Salai, Post Box. No. 1077, Chennai - 600 006	28524010, 28524003	28524003	mad@frick.co.in
COCHIN	: 41/3273-D, Golden Castle Bldg., Old Railway Rd., Cochin - 682018.	2394173	2394173	cochin@frick.co.in
KOLKATA	: Poonam Building, 5/2 Russel Street, Kolkata - 700 071.	22261179, 22267834	22266231	cal@frick.co.in
MUMBAI	: Tiecicon House, Dr. E. Moses Road, Mumbai - 400 011.	24924687, 24925203	24935552	bom@frick.co.in
SECUNDERABAD	: 608.VI Floor, Swapnalok, 92/93, S.D. Road, Secunderabad -500 003.	27813044, 27813897	27813897	hyd@frick.co.in
VIZAG	: D No 3/18, 3 rd Floor, Eswar Homes, 1 st Lane, Dwaraka Nagar, Vizag- 530016.	2553232		vizag@frick.co.in